

## KM 70/20 C

Low-dust sweeping inside and out: the flexible KM 70/20 C manual sweeper achieves optimum cleaning results thanks to its filter, sweeping roller and side brush.



**Order No.** 1.517-130.0

- Roller brush driven by both wheels
- 3x adjustable push handle
- Continuously adjustable roller brush and side brushes

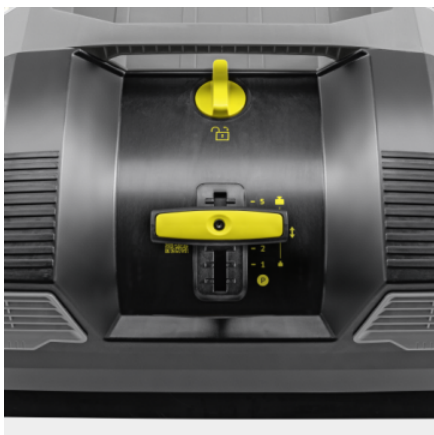
### Technical data

<b>EAN code</b>		4054278809403
<b>Drive type</b>		manual
<b>Max. area performance</b>	<b>Square metres per hour</b>	2800
<b>Working width</b>	<b>Millimetre</b>	480
<b>Working width with 1 side brush</b>	<b>Millimetre</b>	700
<b>Container capacity gross/net</b>	<b>Litre</b>	45 / 20
<b>Weight (with accessories)</b>	<b>Kilogram</b>	21
<b>Weight incl. packaging</b>	<b>Kilogram</b>	26.41

### Equipment

<b>Fine dust filter</b>	■
<b>Manual sweep drive</b>	■
<b>Adjustable main roller brush</b>	■
<b>Fold-down push handle</b>	■
<b>Dustpan principle</b>	■
<b>Outdoor use</b>	■
<b>Indoor use</b>	■

■ Included in delivery.



## Continuously adjustable roller brush and side brushes

- Incrementally adjustable contact pressure for optimum sweeping results.
- Adjusting the contact pressure reduces sweeper roller wear.
- To protect the bristles, the sweeper roller and side brush can be completely relieved of load.



## Dust filter

- The dust filter cleans the exhaust air and prevents dust from flying up during sweeping.
- The filter system is easily accessible for quick and easy replacement.



## Home-Base system

- Convenient storage of additional equipment such as buckets and litter pickers.
- Accessories can be kept handy in a pocket on the push handle.

## EQUIPMENT FOR KM 70/20 C 1.517-130.0



		Order No.	Description	
<b>MAIN ROLLER BRUSHES</b>				
<b>Main roller brush, hard</b>				
Main roller brush, hard	1	6.903-999.0	For the removal of stubborn dirt outdoors	<input type="checkbox"/>

■ Included in delivery.  Available accessories.