

adaptalift **GROUP**



# Gofer TT37

ELECTRIC AERIAL ORDER PICKER



**13 22 54**

[dingliaustralia.com.au](http://dingliaustralia.com.au)

# Dingli Gofer TT37

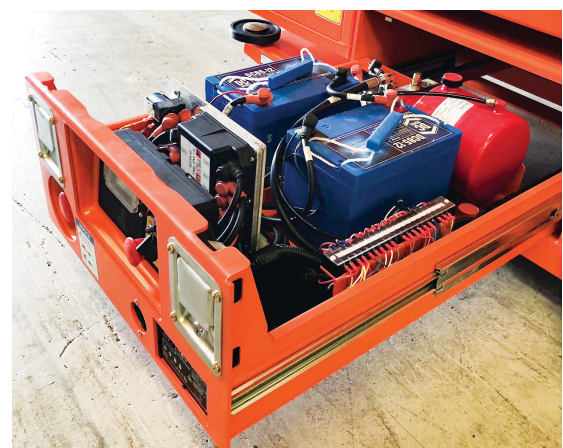
## Electric Aerial Order Picker

The new and improved Dingli Gofer TT37 Electric Aerial Order Picker will revolutionise picking operations with its increased mobility and weight carrying ability.

Adopting the use of the Gofer order picker provides greater efficiency across operations eliminating the need for two people to retrieve high up items.










The unit also unlocks a number of other benefits including eliminating time consuming repetitive up and down actions to retrieve items and reducing the use of potentially unsafe tall rolling ladders.

The Gofer offers owners and operators the ultimate savings opportunities through increased operational efficiencies, application adaptability and flexibility and improved user safety.



### Specifications

### TT37

	S.W.L	300 kg
	Max. Occupants (Indoor/Outdoor)	1
	Max. Working Height	5.70 m
	Max. Platform Floor Height	3.70 m
	Overall Length	1.56 m
	Overall Width	1.06 m
	Overall Height	2.41 m
	Platform Size (Length/Width)	0.71 x 0.80 m
	Ground Clearance	0.08 m
	Wheelbase	1.30 m
	Turning Radius	0 m
	Drive Motors	2 x 24 VDC / 0.4 kW
	Lifting Motor	24 V / 2.2 kW
	Travel Speed (Stowed)	4.0 km/h
	Travel Speed (Raised)	0.8 km/h
	Up / Down Speed	22 / 19 sec
	Batteries	2 x 12V / 105 Ah
	Integrated Charger	24 V / 11 A
	Gradeability	25%
	Maximum Working Slope	2°
	Tyres (Drive Motors)	ø 230 x 80 mm
	Tyres (Front Wheels)	6 in
	Weight	720 kg



## Superior Application Adaptability and Flexibility

The Gofer offers increased adaptability and flexibility equally adept for use in small to large scale warehouse stock picking applications, or as an EWP for use in facilities management.

Used as a stock picker the Gofer allows operators to travel both long and short distances and operate in confined spaces, dealing with small loads in applications such as receiving, shipping and put-away applications across a number of industries including retails, warehouse and industrial.

Used as an EWP the Gofer allows maintenance staff to reach new heights to carry out critical facility management tasks such as installation, repairs and painting of raised areas. The Gofer platform also all for the easy transport of supplies and tools needed to carry out maintenance.

## Productivity

Safely cover long distances at 4km/h when lowered or travel safely raised allowing for accurate movement at height with speed of 0.8 km/h, navigate narrow aisle widths with the 0 degree turning circle.

## Safety

Eliminate the use of potentially unstable tall rolling ladders. Operators experience superior safety enclosed in the Gofer's specially designed platform with security gate and safety bars eliminating falling potential.

## Large Capacity and Superior Lift Height

The Gofer is distinguished from the competition through its large capacity with an S.W.L. of up to 300kg allowing for the transport of larger orders and items or more maintenance equipment.

As well as superior lift capacity the Gofer is able to lift higher than the competition to a height of 5.7m offering increased access to high areas.

## Savings

The Gofer offers owners and operators the ultimate savings opportunities through increased operational efficiencies, application adaptability and flexibility and improved user safety.

## 3 Year Warranty

All new Gofer units include a 3 year warranty, providing buyers with the extra peace of mind should any manufacturing faults occur during the timeframe.

# BRANCHES

---

## VICTORIA

### Melbourne - Springvale (Head Office)

📍 1574 Centre Rd  
Springvale, VIC, 3171  
☎ [03] 9547 8000

### Melbourne - Truganina

📍 42-44 Jessica Way  
Truganina, VIC, 3029  
☎ [03] 9394 4090

## NEW SOUTH WALES

### Sydney (State Office)

📍 219 Newton Rd  
Wetherill Park, NSW, 2164  
☎ [02] 8788 1777

### Riverina

📍 5 Favell Street  
Griffith, NSW, 2680  
☎ [02] 6962 7343

### Port Kembla

📍 20-26 Flinders Street  
Port Kembla, NSW, 2505  
☎ 13 22 54

## SOUTH AUSTRALIA/ NORTHERN TERRITORY

### Adelaide (State Office)

📍 18-22 Churchill Rd. Nth.  
Dry Creek, SA, 5094  
☎ [08] 8360 3444

### Mt Gambier

☎ 13 22 54

## QUEENSLAND

### Brisbane (State Office)

📍 11 Lombank Street  
Acacia Ridge, QLD, 4110  
☎ [07] 3373 5111

### Rockhampton

📍 62 Glenmore Road  
Park Avenue, Rockhampton  
QLD 4701  
☎ [07] 4922 8874

### Townsville

📍 39 Duckworth Street  
Garbutt, QLD, 4814  
☎ [07] 4778 2000

## TASMANIA

### Spreyton

📍 87a Devonport Road  
Spreyton, TAS, 7310  
☎ [03] 6427 3966

## WESTERN AUSTRALIA

### Perth (State Office)

📍 Unit 1, 1-9 Kurnall Road  
Welshpool, WA, 6106  
☎ [08] 9352 9200

### Karratha

📍 Lot 3873-Pemberton Road  
Karratha, WA, 6714  
☎ 13 22 54

**13 22 54**

dingliaustralia.com.au